

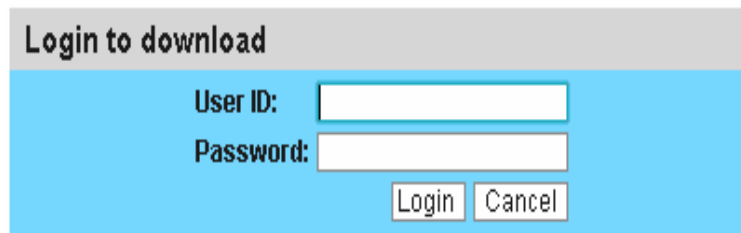
Data retrieval

Sequencing data access

To gain access to your data please click onto the **FTP site link** on the sequencing facility home page MENU BAR

<http://sequencingfacility.med.monash.edu.au>

A login window (displayed below) will prompt you to type in your Institute's username and password (available from the facility)



The image shows a login window titled "Login to download". It has a light blue background. There are two input fields: "User ID:" and "Password:". Below the input fields are two buttons: "Login" and "Cancel".

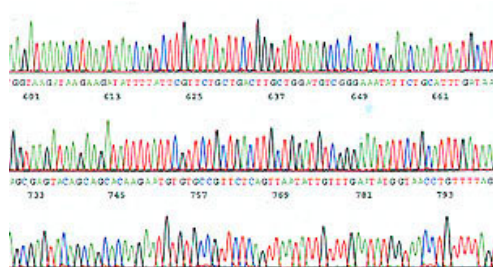
Once you have gained access open your:
own group's folder, then your
individually named folder then the
currently dated folder

Sequencing Files

Each sample generates two files. An analysis file containing the electropherogram and a text file containing the base letter sequence only.

The text file (.seq) can be opened with PC or Macintosh text editing software.

The analysis file contains the electropherogram and information relating to the running conditions of the sample.



The electropherograms can be viewed using shareware programs such as: **Chromas** (for PC users) or **Editview** (for Macintosh users). Links for these programs are on the data retrieval page.

It is essential to check base calling accuracy using the electropherogram as reference. Manual editing especially at the end of the run may be required.